

Today's Webcast starts at 1:00 p.m. Eastern.

Thank you for joining us.

Restroom Design Best Practices to Prevent the Spread of Infection



building
OPERATING
management

Today's Moderator

Amy Brown

Direct of Events and Education,
Trade Press Media Group

Restroom Design Best Practices to Prevent the Spread of Infection



building
OPERATING
management

Today's Presenters



Ron Reim

Executive Vice President and Co-founder
Oculus Inc.



Ali Summerford

Interior Design Director
Oculus Inc.

Learning Objectives

- Discuss the potential for spreading germs in restrooms.
- Learn how toilet facility design plays an important role in infection control.
- Review how product selection can help mitigate the spread of infection.

To Ask Questions:

Hover your mouse to the bottom of the screen and navigate to the Q&A button.

Presentation Handouts

**All participants will receive an e-mail by the end of the day
with a link to download a PDF copy of today's presentation
slides.**

CEU Information

Trade Press Media Group is authorized by IACET to offer 0.1 CEUs for this program.

Trade Press Media Group is accredited by the international association for continuing education and training (IACET) and is accredited to issue the IACET CEU.

To successfully earn 0.1 CEUs, you must attend the entire webcast and earn a 70% or higher on the assessment.



Introduction

- **COVID 19 Impact on the Future of Restroom Design**
 - Common Restroom Trends
 - Healthcare Facilities
 - Senior Living Facilities
 - Education Facilities



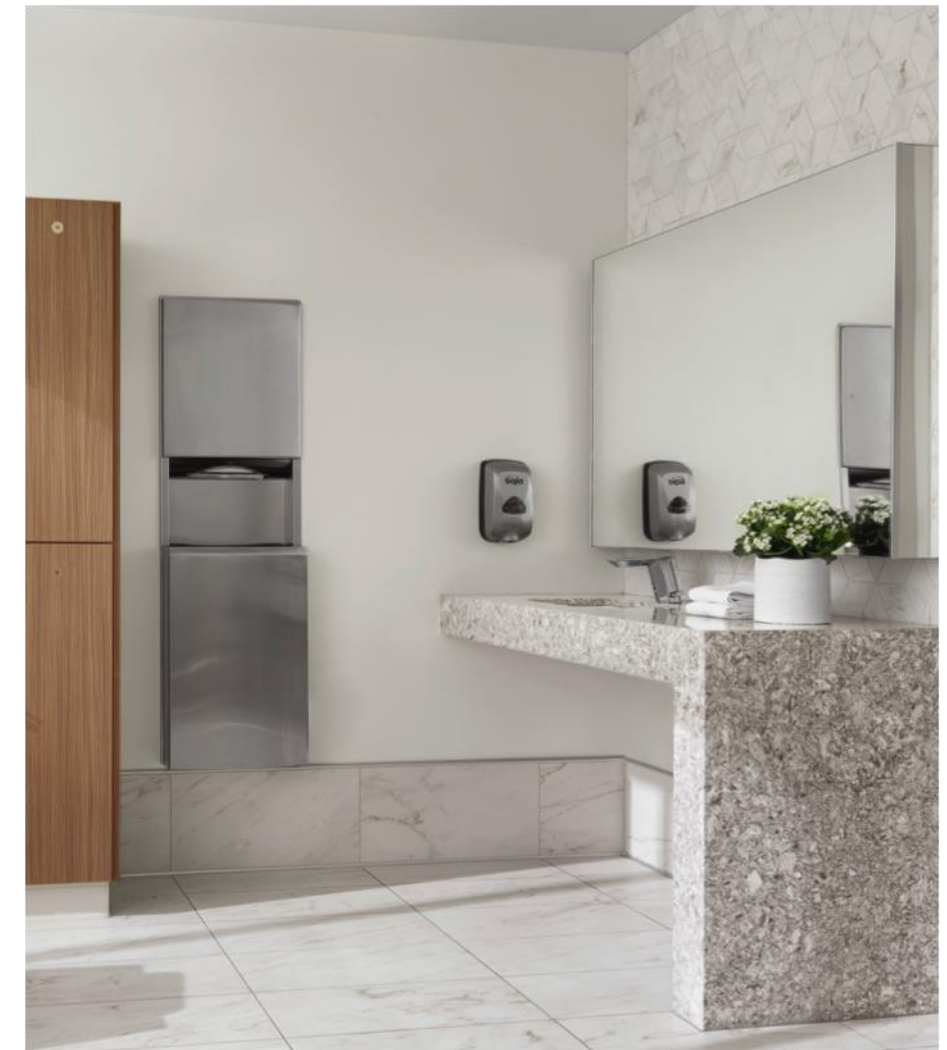
Common Restroom Trends



- **Doors**
 - Limit door handle touch
 - Outward door swing or no doors
 - Limits spread of disease
- **Ventilation**
 - Greater concern than just odor
 - Odor implies air may contain aerosolized virus or bacterial droplets from the plume of toilet flush is not being removed fast enough

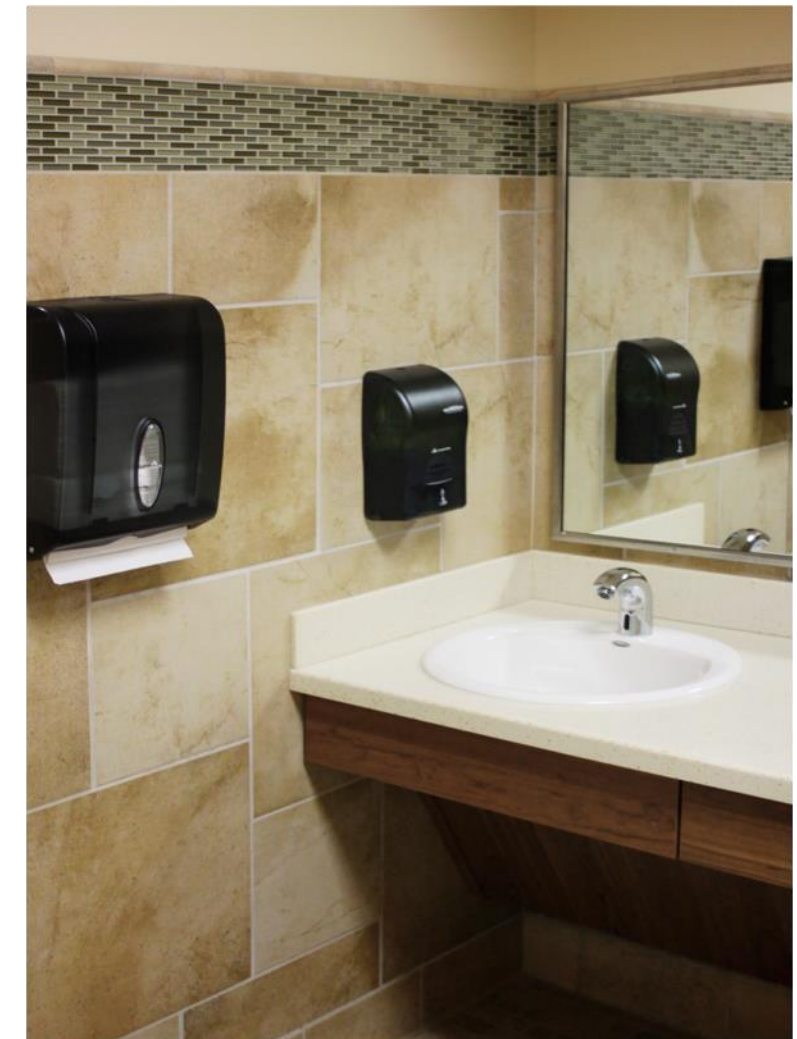
Common Restroom Trends

- **Fixtures**
 - Auto flush toilets
 - Toilet lids to prevent plume
 - Paper towel disposal
- **Materials**
 - Must be durable and easy to clean and maintain
 - Complex interplay: design considerations, owner priorities, and social behavior



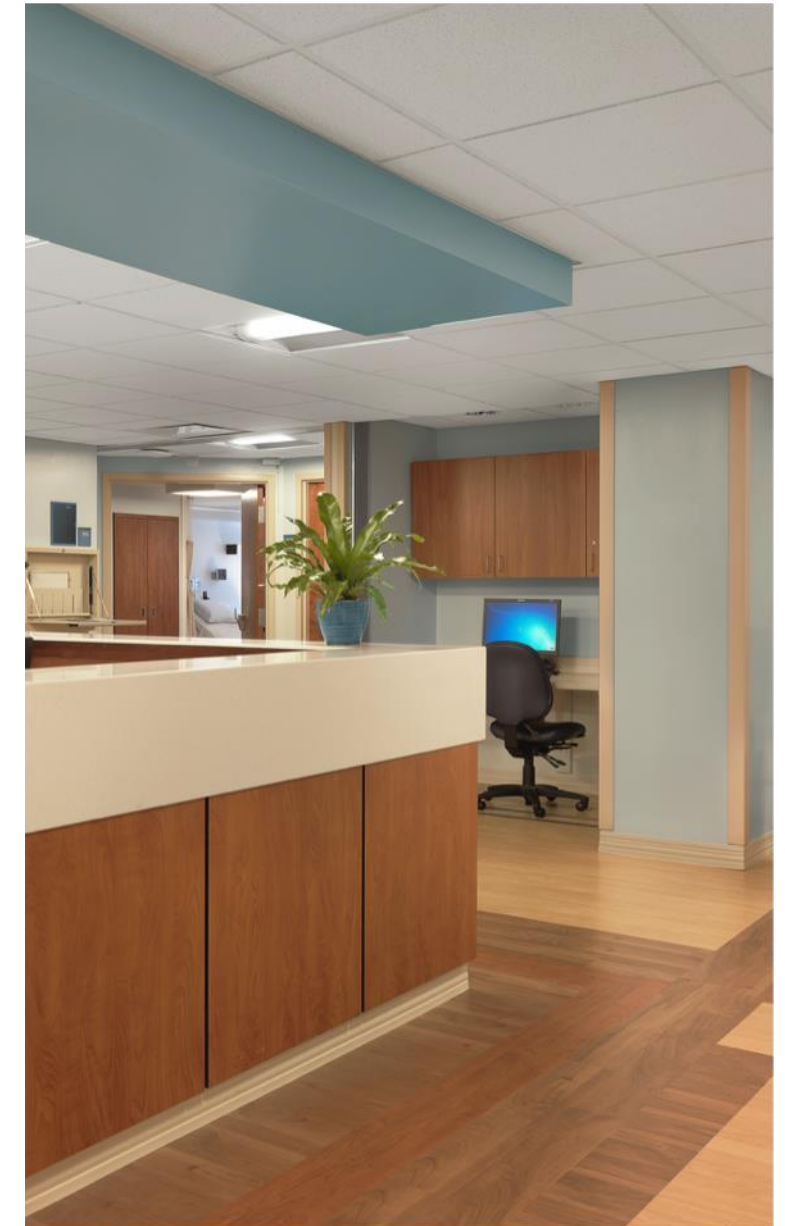
Healthcare Restrooms

- **Infection Control**
 - Priority = Increased infection control
 - Healthcare-Associated Infections (HAIs) = Major Concern
 - Remain current on research and standard practices
 - Room considerations: shape, size, access to material selection, proper pressurization, and air filtration
 - Physical safety, access, and functionality as important as infection control



Healthcare Restrooms

- **Infection Control**
 - Accommodate hospital care delivery needs
 - Elevated public awareness
- **Architecture**
 - Evolving to accommodate changes in society
 - Privacy rights
 - Bariatric
 - Example: 20 Multi-patient patient rooms
 - Redesigned to accommodate 20 single-patient rooms with larger toilet rooms

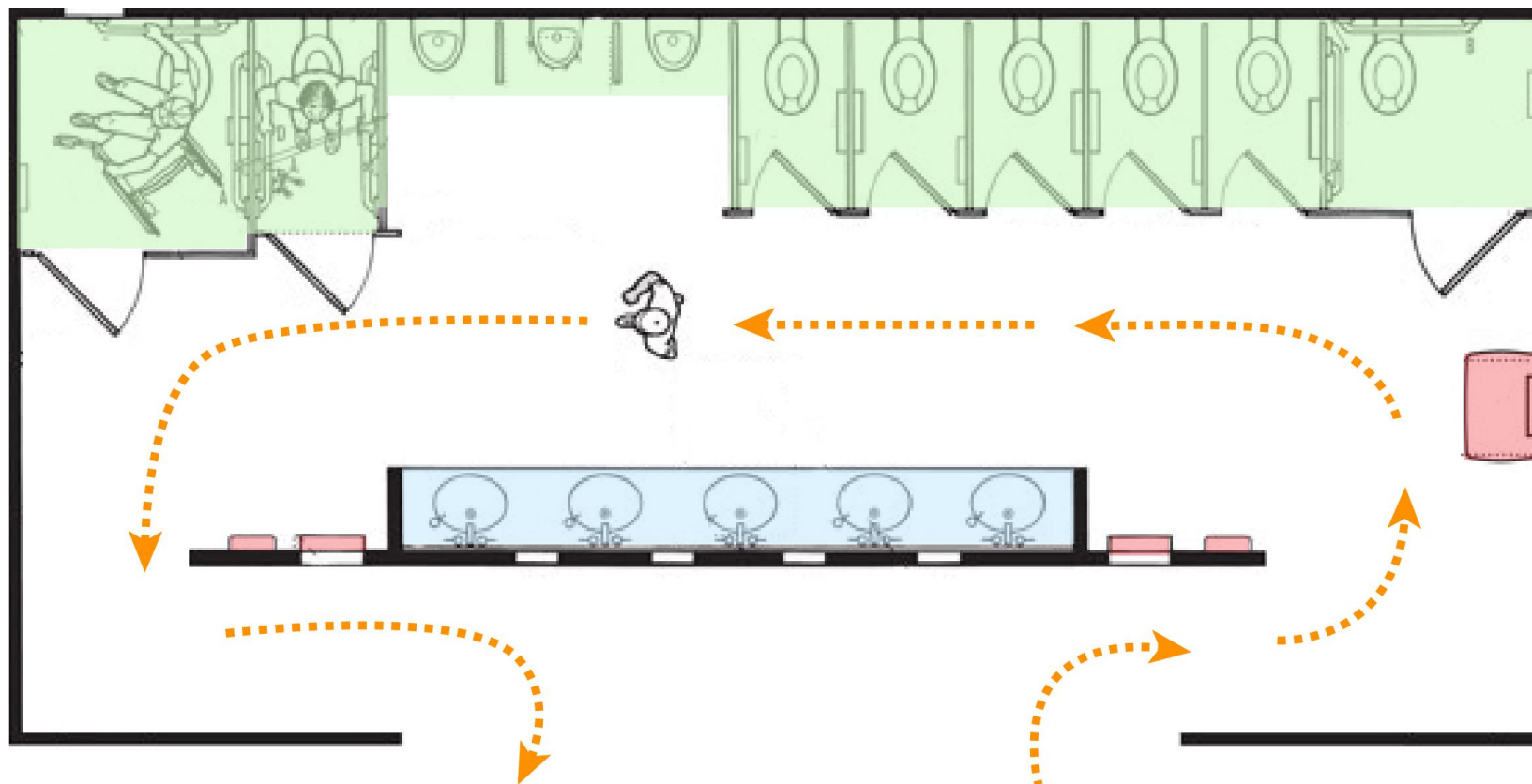


Healthcare Restrooms

- **Aesthetics**
 - Materials
 - Less institutional feeling while retaining durability/cleanability
 - Allow space for toiletries
 - Easily cleaned and maintained
 - Antimicrobial
 - Toilet Seat Lids to contain aerosolized plume from flushing
 - Transmittal virus infectious disease, i.e. Covid-19 and Norovirus
 - Direct patient or cleaning of bed pans



Proposed Layout for Healthcare Restroom



- **Double Open Vestibule Restroom**
 - This layout offers reduction in touch points and reduces face to face interaction

Senior Living Restrooms

- **Architecture**
 - Depending on level of assistance, senior living facilities vary from hospitality/ residential to healthcare environments
 - Many of the same concerns about cleanability of materials, access and fall prevention for hospital restrooms apply here
 - New material options allow for durability/cleanability with improved aesthetics



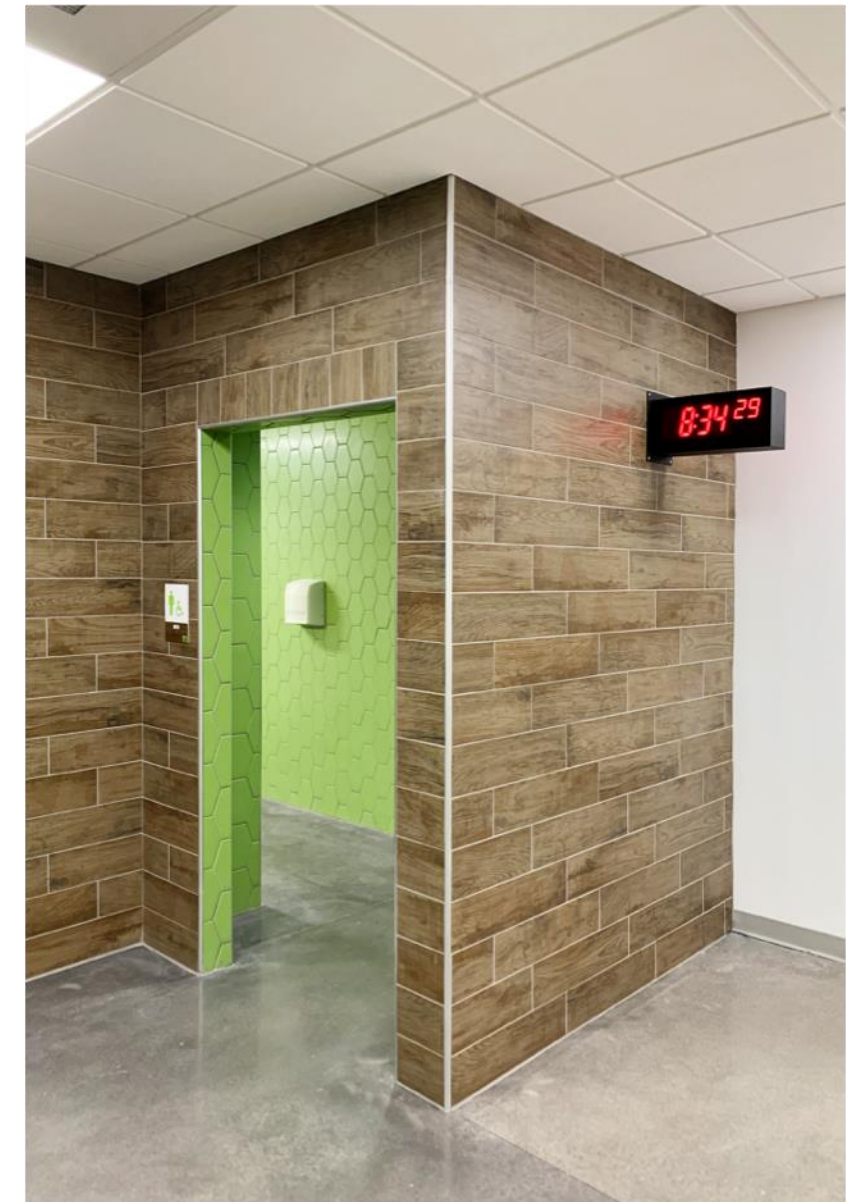
Senior Living Restrooms

- **Functionality** – *similar to hospital*
 - Toilet room location is crucial
 - Resident needs clear travel path from bed to toilet
 - Improve ease of care through improved design



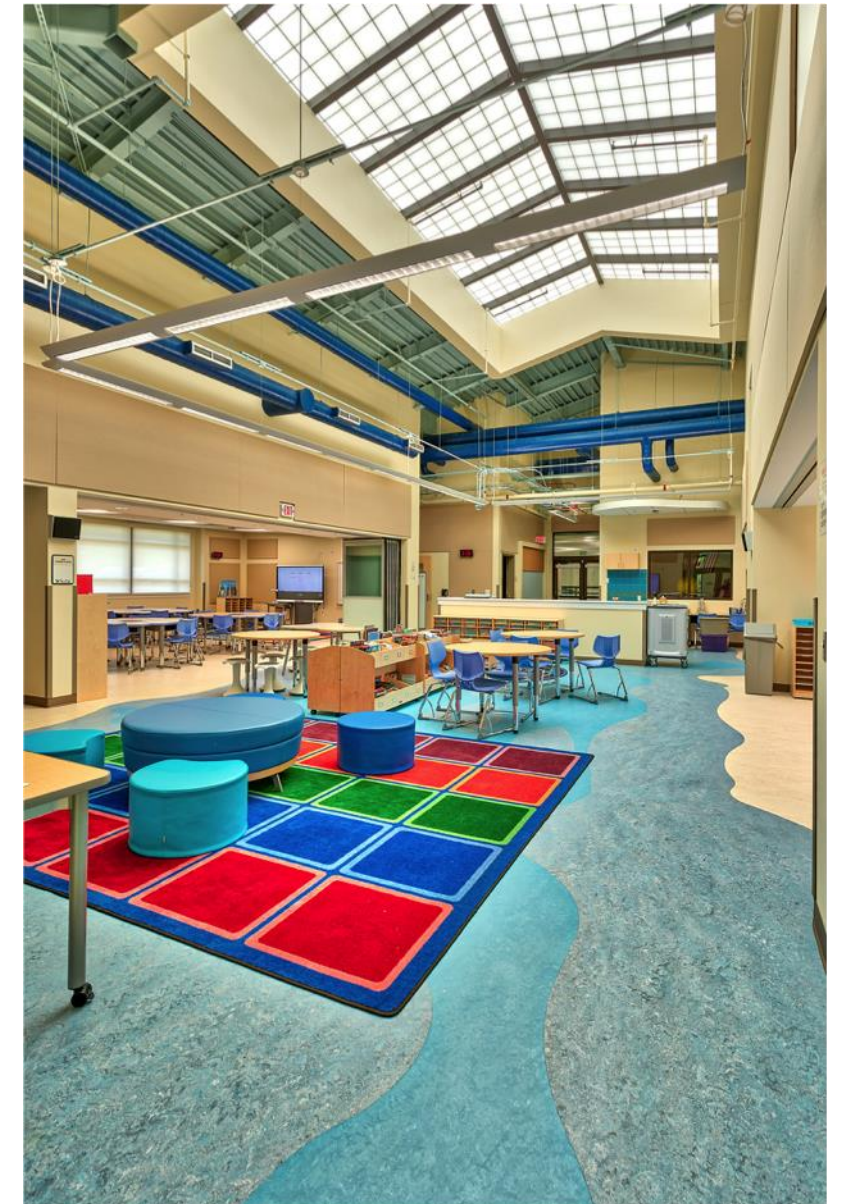
Education Restrooms

- **Infection Control**
 - Kids are notorious for spreading colds, flu and other infectious diseases
 - Lower transmission rate thru better design
 - Children, often asymptomatic carriers with current pandemic



Education Restrooms

- **Functionality**
 - Durability and clean-ability required due to high frequency use
 - Maintainability = Lowering cost for janitorial and custodial services



Education Restrooms

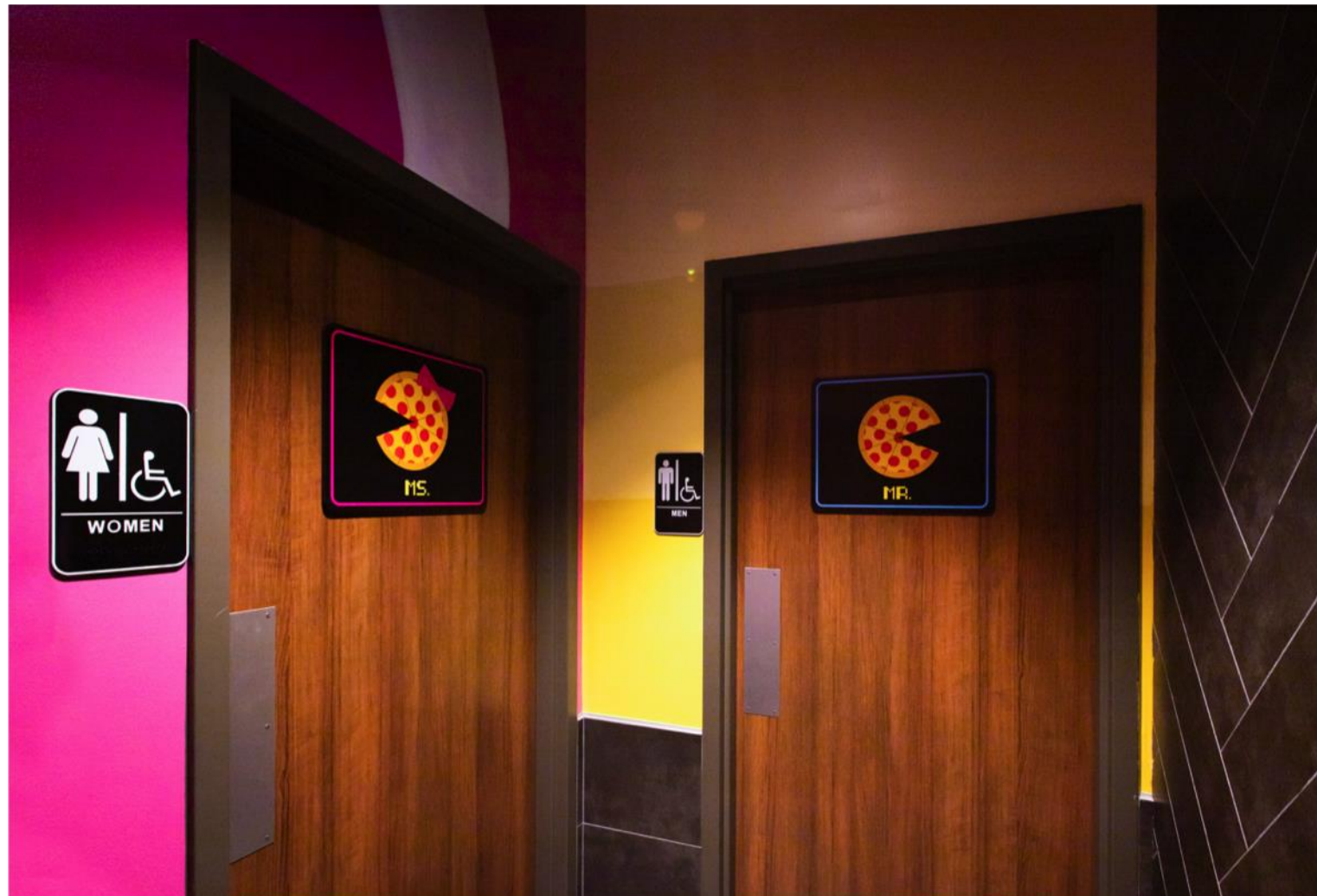
- **Research Based Design**
 - Reduce # of touch points of surfaces
 - Power requirements:
 - Touchless plumbing fixtures
 - Soap dispensers
 - Touchless hand dryers
 - Paper towels dispensers
 - Debate continues about efficacy of air dryers vs. paper towels



Conclusion

- **Restroom Considerations Regardless of Industry Should:**
 - Reduce touch points through hands-free devices
 - Provide toilet seat lids to reduce toilet plume
 - Provide thoughtful, efficient designs with function, privacy, access, and infection transfer
 - Select materials: Easily cleaned and maintained, i.e. natural or intentional antimicrobial properties to kill pathogens
 - Provide proper exhaust & ventilation to remove pathogens & infectious microbes

Question & Answer



Contact Information



Ron Reim

Executive Vice President and Co-founder



Ali Summerford

Interior Design Director

For additional information please email: Webcast@oculusinc.com