



**facilitiesnet**

# ABOUT THE VISION AWARDS

The Vision Awards, sponsored by FacilitiesNet, honor innovation and excellence in products that contribute to the efficient and profitable operations and management of institutional and commercial buildings in the United States.

The Vision Awards program fills a void in the FM industry. Every year, many innovative building products and systems are introduced. It can be difficult for busy facility professionals to keep up with all the new offerings on the market.

## **The Vision Awards highlight important innovations in 10 key categories:**

- Exteriors
- FM Building Services/Tools
- Grounds
- HVAC
- Interiors
- Life Safety & Security
- Lighting
- Power
- Plumbing
- Smart Buildings Technology



**The Vision Awards recognize "best-in-class" FM products based on four key criteria:**



**Cost Savings**



**Technological advancements**



**Efficiency/  
productivity**



**Tenant satisfaction**



# WINNERS IN EXTERIORS

## EagleHawk

### Drone-enabled facility inspection services



Drone-enabled inspections feature drones and thermal imaging technology to find hidden issues. The inspections uncover unknown

issues affecting roofs, facades, district energy systems, solar panels and more. They enable facility managers to make maintenance and capital planning decisions based on the actual condition of their facilities and avoid unplanned energy waste, ineffective repairs and unnecessary replacements.

[Learn More »](#)

## Trex Commercial Products

### Ascent Glass Windscreen



The easy-to-install, post-supported Ascent Glass Windscreen system takes commercial-design possibilities to new heights by deliver-

ing wind protection that elevates the outdoor environment and experience for building tenants. Featuring 1/2-inch laminated glass with aluminum posts and steel stanchions, Ascent protects outdoor pools, dining areas, balconies and terraces at virtually any elevation.

[Learn More »](#)

## Sherwin-Williams

### Emerald Rain Refresh



Emerald Rain Refresh exterior acrylic latex is designed to be self-cleaning by shedding dirt upon contact with rain or water, giving professionals a

simple, convenient solution to maintain clean exteriors. Exterior painting can be a time-consuming task and typically requires constant maintenance against outdoor elements, but Emerald Rain Refresh easily washes away dirt to make upkeep easier.

[Learn More »](#)





# WINNERS IN FM BUILDING SERVICES/TOOLS

## FlexCart

### Engineering Cart



FlexCart is the only maintenance cart line developed from the ground up to precisely meet the needs of working facilities engineers. It was two

years in development with the help of three large facilities companies. More than 50 maintenance professionals at eight different locations were involved in its design, testing and evaluation.

[Learn More »](#)

## Monnit Corp.

### ALTA Wireless Water Detection Puck



Encapsulated in a vulcanized rubber hockey puck, the ALTA Wireless Water Detection Puck monitors for water's presence or absence. Devel-

oped for commercial and enterprise-grade applications, this waterproof sensor detects liquids in spaces such as subfloors, server rooms or elevator shafts. Upon detection, the sensor alerts FMs via text, email or phone call.

[Learn More »](#)

## TerraCycle Regulated Waste

### Bulb Eater 3L



The Bulb Eater 3L with Intelli Technology is the next generation of drum-top lamp-crushing machines. In less than one second, the sys-

tem crushes spent fluorescent lamps of any length, U-tubes and CFLs into 100 percent recyclable material, while capturing more than 99.99 percent of released vapors. The system is mounted to a 55-gallon drum and can hold 1,350 4-foot fluorescent lamps.

[Learn More »](#)

# WINNERS IN GROUNDS, MAINTENANCE, & CLEANING

## Excel Dryer

### XLERATOR Hand Dryer Mobile Hand Hygiene Station



The XLERATOR hand dryer mobile hand hygiene station was introduced at corona-virus testing sites to allow healthcare workers conducting the

testing to practice proper hand hygiene out in the field and away from traditional healthcare environments. Mobile stations feature a unit of the original XLERATOR dryer, which offers a sensor-activated, hands-free, no-touch design that eliminates the push button.

[Learn More »](#)

## JLG Industries

### 1075



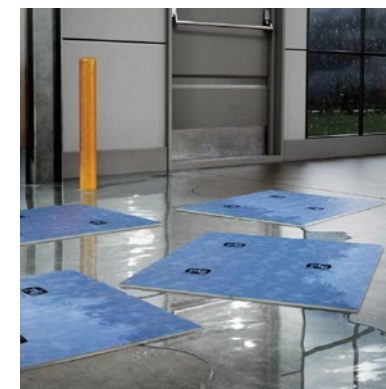
The 1075 telehandler features a 75-foot boom that can lift up to eight stories and offers a 60 feet of forward reach. With its longer boom length,

the 1075 can achieve precision placement further onto a building, effectively doubling the reach of a telehandler with a 55-foot boom, and it comes standard with Longitudinal Stability Indication.

[Learn More »](#)

## New Pig

### PIG Water Absorbent Mat Pad



PIG Water Absorbent Mat Pads are high-performance products specifically designed to catch, contain and absorb water fast. The spe-

cially engineered water products allow users to respond quickly to minimize damage, insurance claims and costs. The wring-and-reuse mats absorb water on contact and help comply with 29 CFR 1910.22 (a)(2) for maintaining floors in a clean, dry condition.

[Learn More »](#)



# WINNERS IN HVAC

## Navien

### NFB-C High Efficiency Fire Tube Condensing Boiler



The NFB-C is a dedicated commercial firetube boiler with an industry-leading 97.5 percent thermal efficiency and an

Energy Star rating. This high-efficiency boiler has a low operating cost that will result in energy savings for the building owner. The compact design offers significant space saving and allows cascading of up to 16 units.

[Learn More »](#)

## Daikin Applied Americas

### Rebel Applied with Intelligent Equipment



The Rebel Applied rooftop system with Intelligent Equipment is designed to optimize operational efficiency. It serves the 30-52 ton

commercial and applied rooftop space, offering the latest in modular cabinet design flexibility and capitalizing on high-performance cabinetry featuring a Class 6 leakage rating at plus/minus 6 inches of static pressure and a thermally broken design that eliminates direct conduction paths.

[Learn More »](#)

## Carrier

### OptiClean Negative Air Machine



The OptiClean portable negative air machine cleans and removes air potentially contaminated by the coronavirus.

In a closed room, the machine uses high-efficiency particulate air (HEPA) filters, an air management system to significantly reduce the presence of coronavirus and other contaminants in the air, and flexible ducting to exhaust the filtered air.

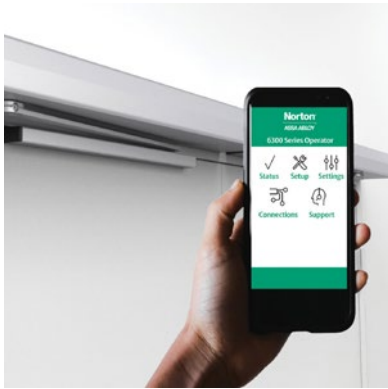
[Learn More »](#)



# WINNERS IN INTERIORS

## Assa Abloy

### Norton 6300 Door Operator



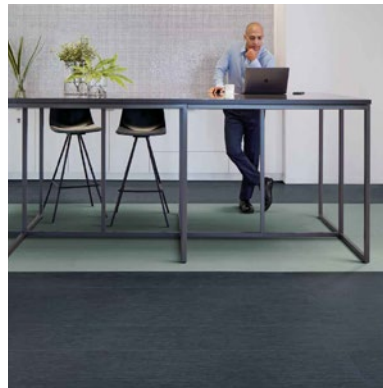
The Norton 6300 low-energy door operator with WiFi programming features a slim profile, enabling it to fit into tight spaces while

blending with the door frame. Its modular design allows for one-person installation for single and double-door applications. It features the first known programming interface offering step-by-step programming using any WiFi-enabled smart device.

[Learn More »](#)

## Interface Inc.

### Brushed Lines



Brushed Lines resilient flooring includes Sound Choice backing, which provides acoustic insulation without additional

underlayment. Sound Choice backing offers best-in-class performance for reduced impact sound and floor-to-floor transmission, contributing to an environment that supports focus and reduces unwanted noise that negatively impacts employee performance and health.

[Learn More »](#)

## Excel Dryer

### XLERATORsync Hand Dryer



The XLERATORsync hand dryer integrated sink fuses no-touch, high-efficiency fixtures on the sink deck, offering an intuitive process to

wash, rinse and dry hands. Eliminating many touchpoints of possible contagion during viral pandemics and beyond, this hygienic user experience eliminates paper towels, in addition to their associated maintenance, mess and health risks: damp piles, overflowing trash cans and clogged toilets.

[Learn More »](#)





# WINNERS IN LIFE SAFETY & SECURITY

## Signtex Lighting Inc.

### Central Battery Series



The Central Battery Series with the monitoring and reporting system is the most advanced and cost-effective system

for emergency lighting today. Used with the innovative ELC – Emergency Lighting Control device – Signtex can convert any lighting fixture into emergency operation or use one of the Moonlite LED Series fixtures offered.

[Learn More »](#)

## INOX

### MicroArmor



MicroArmor Antimicrobial Coating powder coating is infused with antimicrobial technology that reduces the growth and reproduction of

harmful bacteria, mold and mildew by up to 99.9 percent. MicroArmor contains silver ions that attach themselves to a microbe's cellular enzyme to inhibit the growth of the microbe, reducing the spread of bacteria, fungi and mold.

[Learn More »](#)

## Magtech Industries Corp.

### Wireless Emergency Exit Systemtech



The LynxEM by Lynxus, a division of Magtech Industries Corp., is an IoT wireless emergency exit and egress lighting system. With

an average ROI of eight months, it is an easy choice for facility managers upgrading to high-tech smart buildings. The LynxEM is a self-contained wireless mesh network providing computer-based monitoring, testing and reporting.

[Learn More »](#)





# WINNERS IN LIGHTING

## Overdrive

### Multi-Purpose Lighting Retrofit (MPLR) LED Engines



Multi-Purpose Lighting Retrofits (MPLR) are versatile and cost-effective LED engines. MPLRs are offered with multiple mounting-

hardware options to insure easy installation, including a simple magnetic screws option. In retrofits, the mounting-hardware options enable an LED retrofit without having to take a fixture down to retrofit it. industry.

[Learn More »](#)

## eLumigen

### Rough Service LED A19 Lamps

Switching from incandescent rough service lamps to eLumigen rough service LED A19 lamps can save 87.5 percent of energy costs and increase lamp life more than 10 times. eLumigen lamps are rated for 25,000 hour life. The lamps help avoid frequent lamp replacements of conventional LED lamps that can't survive in many harsh environments.

[Learn More »](#)

## Flex Lighting Solutions

### Essentials Series 5.0



Essentials series 5.0 fixtures are high-quality LED high bays designed for use in industrial and manufacturing facilities, warehouses, indoor

sports facilities, aviation hangars, convention centers and car dealerships. These fixtures can withstand high ambient temperatures up to 65 degrees Celsius due to their superior thermal management and vertical extruded aluminum heat sinks designed to dissipate maximum heat.

[Learn More »](#)



# WINNERS IN PLUMBING

## ePIPE / Pipe Restoration Inc.

### ePIPE



ePIPE provides lead-free, leak-free pipe protection. As an alternative to traditional re-piping, the ePIPE patented, proven process restores potable

water pipes in place, which means less destruction and disruption to building tenants or occupants. No more tearing open floors, walls or ceilings. The ePIPE product has a 90-minute cure time, which means coated pipes are ready for water service within two hours.

[Learn More »](#)

## Sloan Valve Co.

### Optima Faucet



The modernized Optima faucet line features the popular spout designs that have made it the sensor faucet with the largest installed-unit

base in the world. Using rugged standardized components, these plumber-friendly products reduce the time to install, service and maintain sensor faucets by 50 percent or more versus competitors.

[Learn More »](#)

## Rheem Manufacturing

### Commercial Tankless System



The Commercial Tankless Water Heater System is factory-tested and designed to provide redundancy, flexibility and support for any

application. Available in wall-hung, wall-mounted and free-standing configurations, the systems are flexible for any installation scenario. The system comes preassembled with durable and efficient 199K BTU/h RTGH-CM95 water heaters and single-point connections for water, gas, electrical and condensate.

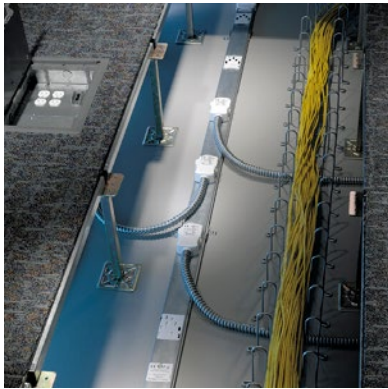
[Learn More »](#)



# WINNERS IN POWER

## Snake Tray

### Snake Bus Power Distribution



Snake Bus Power Distribution is a pre-wired, modular power distribution system for access floors.

Snake Bus delivers 50 amp, three-phase,

208 volts providing up to 18 kilowatts of power in one track system. The system consists of tracks and electrical whips that deliver power where needed. It eliminates the need to hard-wire equipment and can be moved and reused when layouts change.

[Learn More »](#)

## Chatsworth Products

### eConnect Power Distribution Units



eConnect Power Distribution Units (PDUs) answer the growing demand for reliable, intelligent power distribution in data center racks. Intelligent PDUs

allow facilities managers to automate monitoring and better visualize conditions so they can make more informed decisions and avoid costly capital expenses. Remote monitoring provides early warning of pending issues.

[Learn More »](#)

## ABB Inc.

### ACH580-31 ultra-low harmonic (ULH) drive



The ACH580-31 ultra-low harmonic (ULH) drive overcomes challenges of harmonics and helps keep the power network clean. The

ULH drive has an active front end that creates total harmonic distortion current of 3 percent or less, so there is no need for external filters, which increase installation complexity and space.

[Learn More »](#)





# WINNERS IN SMART BUILDINGS/IOT/SOFTWARE

## AkitaBox

### DeepClean Assurance Software Application



AkitaBox DeepClean Assurance (ADCA) software was designed to drive cleanliness in buildings, from schools and hospitals to commercial build-

ings. ADCA assists custodial teams in following proper cleaning protocols and promoting transparency with stakeholders. Users can leverage location-based room pins on their building's digital floor plans to access cleaning routes, as well as customized checklists that identify areas and objects.

[Learn More »](#)

## Dude Solutions

### TheWorxHub

TheWorxHub platform combines four market-leading products for a connected suite of cloud-based operations management applications designed to tackle every operations challenge. The combination of Asset Essentials, Energy Manager, Event Manager and Capital Forecasting allows users to take total control of assets, facilities, maintenance tasks and work orders with Asset Essentials, the cloud-based and mobile CMMS.

[Learn More »](#)

## FM:Systems

### Environmental Fusion Sensors® Cyber Health Dashboard



Environmental Fusion Sensors combined with FM:Systems Analytics provide the ability to monitor and measure indoor air quality simultaneously

with real-time occupancy sensing. Values for humidity, temperature, carbon dioxide, VOCs, light levels, sound and occupancy parameters can be displayed on a heat map, giving full visibility into indoor air quality for each space and how it affects occupancy levels.

[Learn More »](#)