



VISION AWARDS
20 22
WINNER
facilitiesnet

ABOUT THE VISION AWARDS

The 4th annual FacilitiesNet.com Vision Awards honor innovation and excellence in products contributing to the efficient, profitable operations and management of institutional and commercial buildings in the United States.

The Vision Awards recognize products, systems and technologies for their contributions to cost savings, technological advancement, productivity and tenant satisfaction. Winners are chosen in eight main categories, plus three bonus categories.

The eight main categories are:

- Roofing & Exteriors
- Interior Furnishings & Materials
- Building Maintenance & Cleaning
- HVAC
- Analytics & Management Software
- Lighting & Power
- Life Safety & Security
- Plumbing & Restrooms

The three bonus categories are:

- Re-opening
- Smart Buildings
- Wellness & Sustainability



More than 150 products entered this year's Vision Awards program. An independent panel of esteemed facility executives reviewed and judged Vision Awards entries.

Winners were determined by an independent panel of esteemed facility executives. This year's judges were:

- **Matt Bailey**, Landscape Services Manager, Michigan State University
- **James P. Allen**, Division Manager, Workplace Communications, County of Los Angeles, Internal Services Department
- **Alex Kogan**, Associate Vice President, Plant Operations & Housing, The Rockefeller University
- **Charles M. Thomas**, Facility Manager, KIPP DC and Facility Operations Consultant with LACE Management
- **Clarence Carson**, fnPrime Columnist
- **Gregg Sprowl**, Access Controls & Security Systems, Program Manager/C.O.E., Campus Life Services, Facilities, University of California, San Francisco
- **Brendan Robinson, P.E.**, Director of Facilities and Operations, Corporate Real Estate, Under Armour
- **Kimberly Thomas**, Senior Director of Services, UGA Facilities Management Division



WINNERS IN ROOFING & EXTERIORS

REHAU

REHAU Aspekt+™ 1800



REHAU Aspekt+™ 1800 features a strength-enhancing sash in the company's RAU-FIPRO glass-fiber reinforced PVC material. The new

product is designed to meet Passive House requirements while addressing the growing commercial demand for larger windows. The out-swing casement window provides superior thermal, acoustic and structural performance, and can be built for up to 30 percent larger openings with long-lasting stability and torsional rigidity in a variety of colors.

Continuus Materials

Everboard Brand Roof Cover Board



Comparably priced to gypsum glass mat roof cover boards, Everboard brand roof cover board was purposely engineered to deliver superior hail

and wind uplift protection. It is UL Class-A fire and FM Very Severe Hail rated. Every 1,000 square feet of Everboard diverts 2,000 pounds of recycled plastic and paper from landfills. At the roof systems' end of life, the product can be ground up and turned into another board.

The Garland Company

R-Mer Shield



R-Mer Shield standing seam metal roof system can withstand wind speeds over 200 mph, offering strength, durability and waterproofing

protection for 30 years or more. The high-performance clip and seam design provides unlimited thermal expansion and contraction to alleviate the effects of oil-canning and prevent seam buckling or separation due to temperature extremes, resulting in longer service life. The product is available in steel, aluminum, zinc, copper and stainless steel.



WINNERS IN INTERIOR FURNISHINGS & MATERIALS

DIRTT Environmental Solutions Inc.

Modular Interiors



Resilient modular interiors are built faster, cleaner, more sustainably and cost-efficiently. From moveable walls, timber capabilities, case work,

raised flooring applications, integrated ceiling components, to the ability to embed technology within walls, users are able to quickly adapt their spaces to meet current and future needs. 3D visualizations allow clients to conceptualize and experience their space pre-build and communicate specifications and changes in real time directly to the manufacturing floor – eliminating cost overruns and a prolonged schedule.

PPG

HOMAX TEX>>PRO Texture System

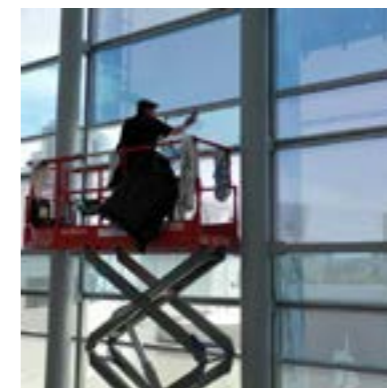


The texture sprayer and cartridge system makes the job of spraying texture on interior walls and ceilings faster, lighter, and more cost-effective

than traditional hoppers. The HOMAX TEX>>PRO Texture System is 60 percent lighter when full than traditional hoppers with a neutral two-handed grip that allows greater ease. Users can achieve consistent results by adjusting the air pressure and spray tip, with very fine to coarse textures and minimal overspray. The system turns texturing work into a one-person job.

Avery Dennison

R Silver 20 Solar Safety Interior Window Film



R Silver 20 Solar Safety Interior Window Film combines the reinforced protection of security laminates with superb solar heat and glare rejection.

That superb heat rejection helps facilities reduce cooling costs while enhancing the comfort of building occupants. The product also blocks 99 percent of damaging solar UV light. These rays are bad for skin and damaging to furniture and fabrics. It also offers daytime privacy and a sophisticated appearance.



WINNERS IN BUILDING MAINTENANCE & CLEANING

STARC Systems RealWall



The reusable, modular walls deliver the look and feel of a traditional wall while significantly reducing renovation noise. RealWall panels and doors

provide first-rate sound attenuation, reducing construction noise up to 50 percent. No taping, mudding, sanding or painting is required. The fully integrated negative air panels also help create a negative air pressure environment, which helps contain renovation dust, pathogens and odors — a requirement in healthcare and lab settings.

Vaask Vaask Touchless Hand Sanitizing Fixture



Vaask incorporates a high-end stepper motor and peristaltic pump in its design, ensuring that it dispenses the correct amount of sanitizer

every time. The fixture tracks usage to alert managers via an exterior LED panel and an online dashboard when it's time to refill. The proprietary PalmPilot sensor accurately detects hands, eliminating mess. The technology measures the speed at which light photons leave its sensor and return so it still functions in spaces with dust, and detects hands of any shade.

Bona US Bona Commercial System Resilient Flooring Solution



Bona Commercial System Resilient Flooring Solution renews old, worn, and cracked resilient floor surfaces such as linoleum, PVC, rubber

and LVT. The renewal of a resilient floor works out to be at least 40 percent less expensive compared to installing a new floor. The product helps achieve a modern fresh look with nine standard colors or a custom color to match any Pantone color standard. Users can create game lines for a sport floor or add directional arrows to improve traffic flow in a hospital.



WINNERS IN HVAC

Energy Harness LED Lighting Active Airflow UV-Fixture



Active Airflow UV Fixture circulates room air many times per hour through encapsulated UV-C light, eliminating pathogens while keeping occupants safe.

The UVGI device is tested and proven to inactivate COVID-19 and other pathogens in occupied rooms. Unlike traditional fluorescent UV tubes, UV-C LEDs are free from the use of mercury and are based around solid state technology that can deliver specified wavelengths of UV-C as well as dosages that are used to inactivate airborne pathogens.

Grundfos Distributed Pumping



Distributed Pumping is a hydronic system design that optimizes the entire HVAC system while improving occupant comfort. It replaces energy-wasting balance

and control valves in HVAC systems with intelligent, reliable, and maintenance-free pumps that generate pressure only when and where it's needed. This significantly reduces the time consuming and costly process of balancing the HVAC system. It also ensures a continuously balanced HVAC system years later. This translates to improved building comfort.

Pure Air Control Services, Inc. HVAC New Life Restoration

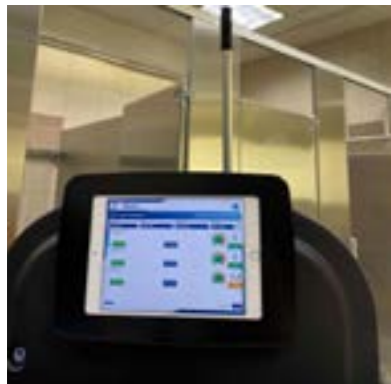
HVAC New Life Restoration is a hygienic restoration service that ensures a longer lifespan and optimal performance for an aging HVAC system. The product combines PURE-Steam HVAC Hygienic cleaning with a coating and liner process to effectively restore an AHU for many years of continued service. The HVAC refurbishment provided includes a HVAC Hygiene Assessment. This evaluation uses testing and inspections to determine the health of the system and its impact on the indoor environment.



WINNERS IN ANALYTICS & MANAGEMENT SOFTWARE

TRAX Analytics

TRAX



TRAX is a software platform and mobile application that manages the janitorial operation through real-time, historical, and predictive data. The

product is broken into 3 modules to support the needs of any size facility management company or facility: TRAX Clean+Inspect (mobile application for janitorial management and quality control), TRAX SmartRestrooms (consumes data from sensors to alert teams when to clean in real time), and TRAX CleanConnect (a facility-wide cleaning tool that integrates with CMMS and monitors staff location).

Xovis

Xovis Sensors



Xovis sensors determine the occupancy of a space and utilize AI features that can detect face mask usage, view direction, gender, and

more. By determining peak traffic times, as well as demographic information about that traffic, managers can better understand how to divert resources and utilities, saving time and money. Sensors use onboard Artificial Intelligence that can keep track of occupants throughout a space, even tracking them through multiple sensors with the use of the Sensor Stitching feature.

Schneider Electric

SpaceLogic Insight-Sensor



SpaceLogic Insight-Sensor is a six-in-one room sensor for room occupancy, light, sound, temperature, and humidity sensing. It delivers tenant comfort

and productivity while reducing energy use and costs when integrated with EcoStruxure Building Operation. The product uses real-time, anonymous people-counting that enables precise insights and control. When integrated with the building management system, it responds dynamically to changes, heating or cooling rooms based on number of occupants. Knowing occupant number enables accurate room condition optimization response 15-30 minutes faster.



WINNERS IN LIGHTING & POWER

Intermatic

ARISTA Advanced Lighting Control System



ARISTA Advanced Lighting Control System features Bluetooth mesh technology to help users create dynamic lighting environments

that improve energy efficiency and promote occupant comfort. By using Bluetooth technology users do not need to have a smart lighting hub or an active Wi-Fi network to fully install, configure, and use the product. The system is adaptable for each building as customers can choose the (wired or wireless) components they need a la cart and configure their system using the mobile app.

Leviton Manufacturing Co., Inc.

Powerswitch Disconnect with Inform Technology



Powerswitch Safety Disconnect Switch with Inform Technology includes condition monitoring sensors and communications, providing real-time

data to the end user so they don't need to open electrical devices to diagnose problems and address potential hazards. The data includes liquid accumulation, enclosure temperature/humidity, ground continuity, individual line- and load-side voltage values, and more. Data can be viewed locally on the device via LED indication or remotely via Wi-Fi or Modbus RTU to improve safety, efficiency and productivity.

Solatube International Inc

Flame-Resistant Skylight



Made with a fully-tempered top layer and two layers of glass laminated with a layer of PVB, the Flame-Resistant Tubular Skylight prevents the

skylight glass from dropping to the floor and igniting a fire inside the building. Featuring a multi-pane glass disk with a steel ring, the Rooftop Fire Glazing accessory meets ANSI Z97.1 safety glazing requirements. When used in conjunction with the flame-resistant Dome Edge Protection Band, the product meets the prescriptive building code requirements for areas located in high fire areas and Wildland-Urban Interface zones.



WINNERS IN LIFE SAFETY & SECURITY

STARC Systems

FireblockWall



FireblockWall is a reusable, one-hour fire-rated containment system. With its proprietary inner core, the product provides a certified

one-hour fire rating and superior noise blocking, with an STC rating of 40. It blends into healthcare or commercial environments while hiding the disruption of renovations, and it exceeds both ICRA Class V and ASTM E-84 requirements. It is up to four times faster to install than drywall and requires no taping, mudding, sanding or painting.

Allegion

LCN 6400 Series COMPACT Automatic Operator



The LCN 6400 COMPACT Automatic Operator automates interior openings, like restrooms, offices, or common areas.

Designed to easily make upgrading an opening for ADA compliance or touchless operation, the product costs significantly less than traditional automatic operators. It can retrofit onto an existing mechanical closer. The motor gearbox mounts directly onto the LCN 4040XP mechanical closer without drilling, removal, or modification to the door or mechanical closer.

Unique Fire Stop

Core Bore Firestop



Core Bore Firestop and Seal System can firestop, water and smoke seal abandoned (empty) core holes in concrete slabs or walls.

Made with a heavy steel plate and an intumescent firestop muffin, in the event of a fire, the plug expands, filling the core hole and protecting the building and its occupants according to the fire rating of the barrier. Users drop the product in the hole with a bead of Silicone Firestop Sealant. It is removable if the abandoned core should need to be reclaimed in the future.



WINNERS IN PLUMBING & RESTROOMS

Tapmaster Incorporated Hands Free Faucet System



The Hands Free Faucet System operates entirely on water pressure using a pilot/slave valve pair instead of an electrical connection

or batteries. This allows for extremely sensitive activators that can be completely sealed against contaminant ingress in hospital settings while being completely field repairable. The product is also able to retrofit existing faucets by installing a valve-set between the faucet and the shut-off valve. The product is vandal resistant.

Rheem Manufacturing Commercial Heat Pump Water Heaters



Commercial Heat Pump Split Systems leverage technology that uses heat energy from the air surrounding the unit to heat water, which enables greater

efficiency and balance between sustainability and business operations. Heat pump water heaters reduce energy use by up to 75 percent and can improve building efficiency ratings. The system's design also means routine maintenance consists only of replacement of the air filter.

Rheem Manufacturing Triton



Triton high-efficiency commercial gas water heater uses LeakGuard and LeakSense protection features. LeakGuard prevents leaks with

an all-inclusive detection system and proprietary auto shut-off valve, limiting leakage to no more than 24 ounces of water, while LeakSense detects leaks as small as a grain of sand. Systematic health checks and preventative maintenance help detect and alert potential issues while extending tank life. EcoNet Smart Monitoring Technology with Integrated Wi-Fi allows users to monitor the unit's components remotely on a mobile device via an app.



WINNERS IN REOPENING

Allegion

LCN 6400 Series COMPACT Automatic Operator



The LCN 6400 COMPACT Automatic Operator automates interior openings, like restrooms, offices, or common areas.

Designed to easily make upgrading an opening for ADA compliance or touchless operation, the product costs significantly less than traditional automatic operators. It can retrofit onto an existing mechanical closer. The motor gearbox mounts directly onto the LCN 4040XP mechanical closer without drilling, removal, or modification to the door or mechanical closer.

TruSens (ACCO Brands)

Performance Series Air Purifier



Performance Series Air Purifier features SensorPod that measures VOCs in the air, communicating real-time readings back to the air purifier. The

air quality display on the front reflects readings with a color-coded ring and air quality number. Each air purifier has combination filters comprised of a True HEPA filter with Activated Carbon and a durable mesh pre-filter to capture 99.99 percent of airborne viruses and bacteria, including Coronavirus. Activated Carbon breaks down VOCs and odors.

Condeco

Condeco



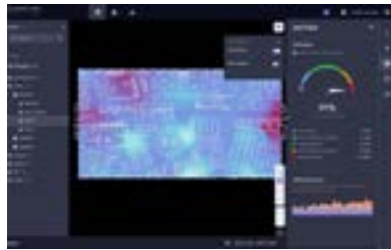
The enterprise level workspace solutions empower leaders to manage space allocation based on employees' needs, not real estate. The product

delivers intelligent data analytics to measure how the office really works, providing insights into why employees use specific spaces so organizations can understand what teams need to be productive and engaged. Proxyclick visitor management platform helps organizations welcome back employees and visitors into the workplace without compromising health, security, or compliance.



WINNERS IN SMART BUILDINGS

Lambent (formerly Armored Things) AI-powered Software



AI-powered software helps facilities professionals understand the physical spaces they manage. The platform leverages existing Wi-Fi, camera

and RFID infrastructure to provide a complete picture of how/when people occupy spaces. Users can see movement of people through detailed live and historical heatmaps, and visualizations on web-based dashboards and mobile apps. With this information, they can project large move/migration impacts on space utilization and costs; measure and improve campus and workplace experiences; and increase the productivity of staff and resources.

iOffice + SpacelQ Serraview SVLive2



Serraview is an enterprise-ready space planning and workplace management solution. The SVLive2 feature empowers

organizations to make changes in real time and strategic real estate decisions over the long term. For space allocation, the product uses the Internet connection from computers and mobile phones as a data point to indicate presence. The platform shows users when a space is occupied, and that data can be layered onto floorplans to visualize real-time occupancy and density.

Turntide Technologies Technology for Sustainable Operations



Harnessing advances in motor design, control software, and cloud-based intelligence, the Technology for Sustainable Operations significantly reduces

energy consumption and operating costs in buildings. At the system's core is the Smart Motor System, a reluctance motor running on patented motor control algorithms that can be dropped into HVAC systems. The controller helps the variable-speed motor work at optimized efficiency across a broad range of speeds, customized sequences of operation or application-specific functionality and protects the system from damage or failure.



WINNERS IN WELLNESS & SUSTAINABILITY

Energy Harness LED Lighting

Active Airflow UV-Fixture



Active Airflow UV Fixture circulates room air many times per hour through encapsulated UV-C light, eliminating pathogens while keeping occupants safe. The UVGI device is

tested and proven to inactivate COVID-19 and other pathogens in occupied rooms. Unlike traditional fluorescent UV tubes, UV-C LEDs are free from the use of mercury and are based around solid state technology that can deliver specified wavelengths of UV-C as well as dosages that are used to inactivate airborne pathogens

TruSens (ACCO Brands)

Performance Series Air Purifier



Performance Series Air Purifier features SensorPod that measures VOCs in the air, communicating real-time readings back to the air purifier. The

air quality display on the front reflects readings with a color-coded ring and air quality number. Each air purifier has combination filters comprised of a True HEPA filter with Activated Carbon and a durable mesh pre-filter to capture 99.99 percent of airborne viruses and bacteria, including Coronavirus. Activated Carbon breaks down VOCs and odors.

Cello Lighting, Inc.

IMMUNE.us



IMMUNE.us air risk monitoring system is a web-based application system that can visualize the real-time infection risk to alert the facility stakeholders.

It includes IoT enabled on-site multiple-functional sensors (CO2, occupancy, ambient light, temperature, humidity, PM2.5) and a remote AI cloud server. All the sensors continuously streamline the data to a remote cloud server with a proprietary AI/machine learning engine to visualize the air infection risks based on more than 40 parameters, including the real-time vaccination rates web-scraped from a local public health agency website