

UNTHSC Community Garden

Fort Worth, TX



*Creating Solutions for a
Healthier Community*

UNT | HEALTH
SCIENCE CENTER
OFFICE OF SUSTAINABILITY



History

The UNTHSC Sustainability Committee began planning the garden in 2012. The garden was founded in February 2014 when over 40 volunteers built 16 plots. Since then, we have expanded and have a total of 35 (12' X 4') plots. The garden is organic and has sustainable features such as rain barrels, compost bins, and repurposed picnic tables. UNTHSC students and employees as well as community members manage the plots.



Mission

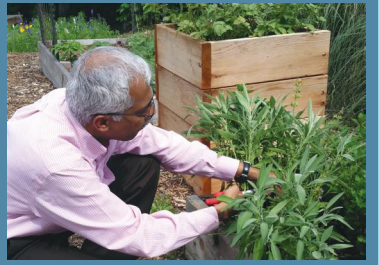
The mission of the garden is to:

- Enhance university and community engagement
- Promote sustainable food production
- Educate on health and nutrition, environmental stewardship, and gardening techniques

Benefits

The garden fulfills UNTHSC's mission of creating solutions for a healthier community by:

- Promoting health and nutrition
- Providing educational opportunities
- Enhancing community engagement
- Team building
- Environmental stewardship



What is a Community Garden?



It can be located just about anywhere (rural, urban, suburban, etc.)



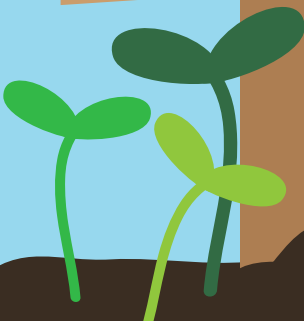
Grow a variety of vegetation (vegetables, flowers, herbs, etc.)



Be individual or communal plots



Be owned and operated by all types of organizations (such as schools, neighborhoods, etc.)





At least **25%**
of the yield
is donated to a
local food bank,
serving people
in need!



Governance

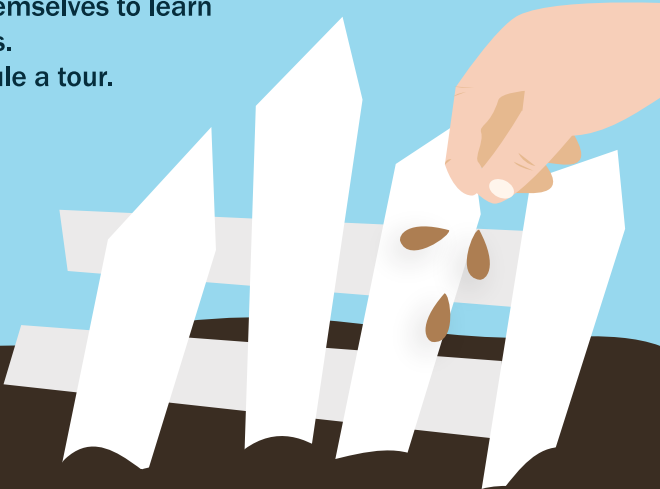
Our garden is managed by the Community Garden Steering Committee and overseen by the Office of Sustainability through Facilities Management.



Education

The garden provides tours to many types of groups, including school children, as well as providing opportunities for the gardeners themselves to learn techniques and skills.

Contact us to schedule a tour.



A community garden is *“any piece of land gardened by a group of people.”*

(American Community Garden Association)

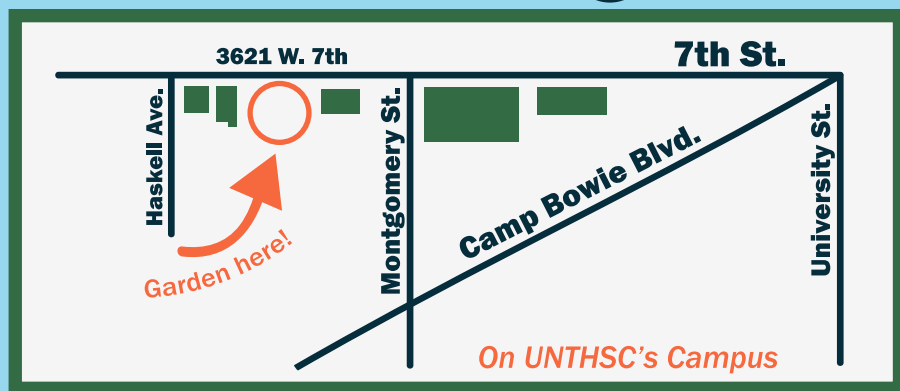


Get a Plot



Plots are gardened by campus and community members.
We have 35 (12' X 4') plots. If you'd like a plot, please contact us.
We have a waiting list if the garden is full.

Location



Sponsors

We would like to thank the following organizations for their donations to the garden:

- Archie's Gardenland
- Calloway's Nursery
- Four Star Café
- Freehling's Tree Service
- Marshall Grain Co.
- Silver Creek Materials
- Saint-Emilion Restaurant
- Texas A&M AgriLife Extension Tarrant County
- UNTHSC Facilities Management
- UNTHSC Sustainability Committee



Contact

Phone: 817-735-2451

Email: sustainability@unthsc.edu

Website: unthsc.edu/communitygarden

